

YSD20L-20 SERIES



Input: 85-264VAC 50/60Hz
Output Voltage: 5V-24V DC
Rated Power :20W max

Features

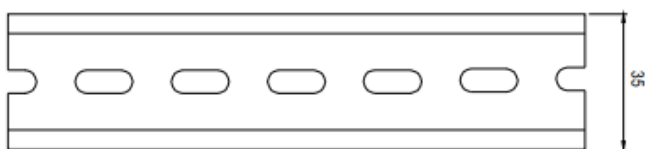
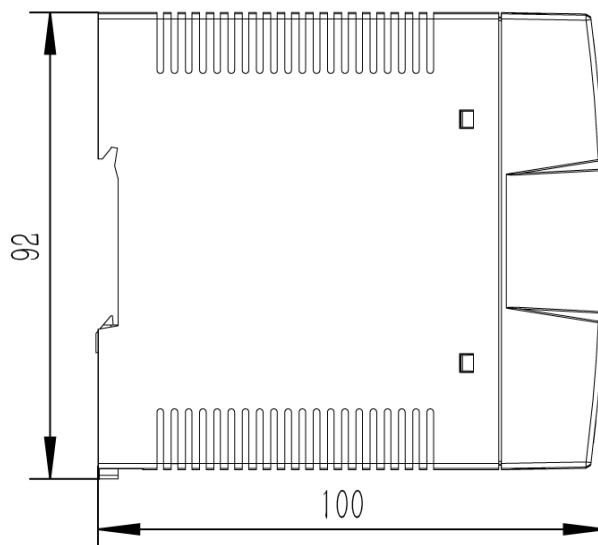
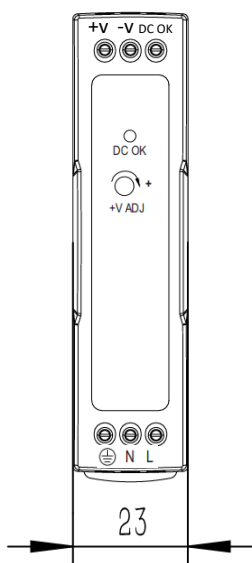
1. International universal full range of exchange input
2. Protection type: over load/over voltage/short circuit
3. DC output voltage adjustable
4. Cooling by free air convection
5. Installed on DIN rail TS-35 / 7.5 or 15
6. Built-in DC OK active signal
7. LED indicator for power on
8. Three years warranty
9. Class I

Application

Access Control
Automation
Communication Equipment
Industrial Control Systems

UL US CE CB RoHS

■ Dimensions and Installation



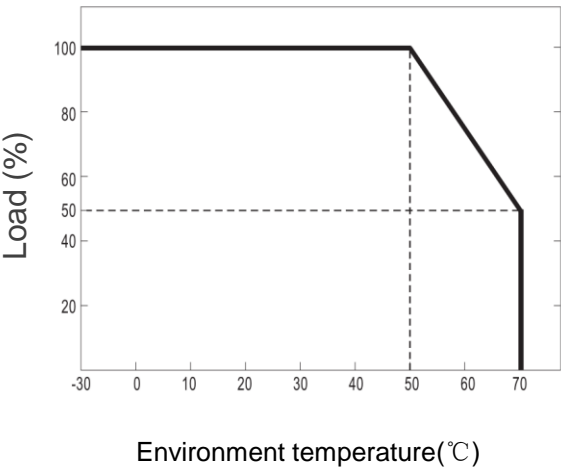
ADMISSIBLE DIN-RAIL: TS35/7.5 OR TS35/15

YSD20L-20 SERIES

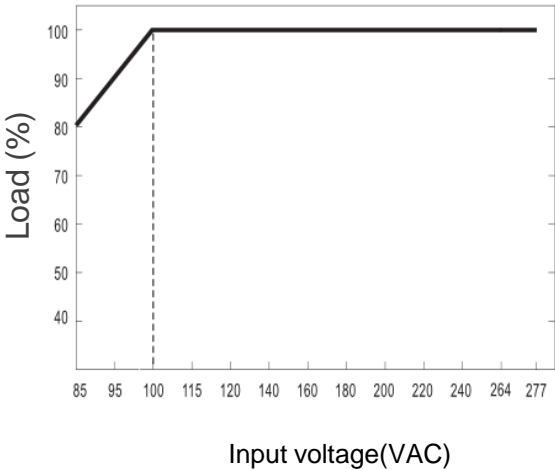
MODEL DETAIL SPEC.		YSD20L-0503000	YSD20L-1201670	YSD20L-1501340	YSD20L-2401000
INPUT	Input Voltage:	85-264VAC			
	Input Frequency:	50/60Hz			
	Inrush Current:	35A/115VAC 70A/230VAC			
	AC Current:	0.33A/115VAC 0.21A/230VAC			
	Leakage Current:	< 0.25mA/240VAC			
	Efficiency:	76%	80%	81%	84%
OUTPUT	DC Voltage:	5V	12V	15V	24V
	Rated Current:	3A	1.67A	1.34A	1A
	Rated Power:	15W	20W	20W	24W
	Voltage Tolerance:	±5%	±5%	±5%	±5%
	Ripple and Noise:	80mVp-p	120mVp-p	120mVp-p	150mVp-p
	Line Regulation:	±2%	±1%	±1%	±1%
	Load Regulation:	±1%	±1%	±1%	±1%
	Setup, Rise, Hold Up time:	500ms, 30ms/230VAC 1000ms, 30ms/115VAC at full load			
ENVIRONMENTAL	Operating Temperature:	-20℃ to 60℃, Full Load, Normal Operation			
	Storage Temp:	-40℃ to 85℃			
	Storage Humidity:	10 ~ 95% RH			
	Working Humidity:	20% ~ 95% RH Non-Condensing			
PROTECTION	Over Load:	>105%-150% Rated Output Power			
		Protection type: Hiccup Mode- recovers automatically after fault condition is removed			
	Over Voltage:	5V:5.75~ 6.75V 12V:13.8 ~ 16.2V 15V:17.25 ~ 20.25V 24V:27.6 ~ 32.4V			
		Protection type : Shut down o/p voltage, re-power on to recover			
	Over Temperature:	Shut down o/p voltage, re-power on to recover			
SAFETY & EMC	Over Current:	110%-180%			
	Safety Regulations:	UL508, TUV BS EN/EN62368-1, EAC TP TC 004, BSMI CNS14336-1, AS/NZS 62368.1 approved			
	Withstand Voltage:	I/P-O/P:3KVAC I/P-FG:2KVAC O/P-FG:0.5KVAC			
	Isolation Resistance:	I/P-O/P, I/P-FG, O/P-FG:100M Ohms / 500VDC / 25℃ / 70% RH			
OTHER	EMC Emission:	Compliance to BS EN/EN55032 (CISPR32), BS EN/EN61204-3 Class B, BS EN/EN61000-3-2,-3, EAC TP TC 020, CNS13438 Class B			
	MTBF:	200,000 Hours Minimum at Full Load at 25℃ Ambient			
	Size:	23*100*92mmmm			
	Weight:	150g / pcs			
	Packaging:	100PCS/CTN			

YSD20L-20 SERIES

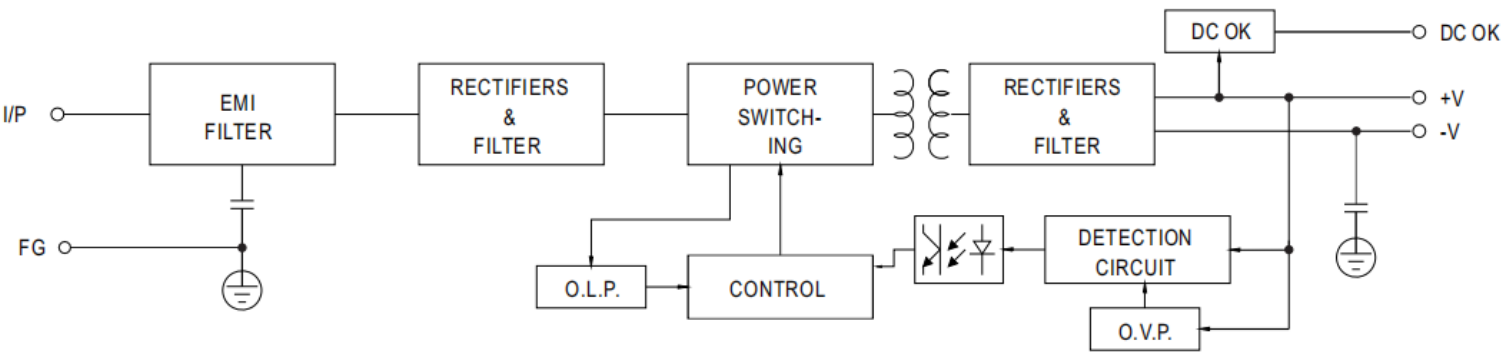
Deduction curve and temperature



Minus output and input voltage curves

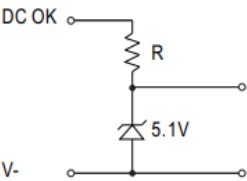


Functional Diagram



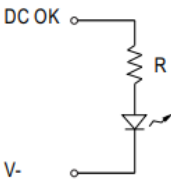
Application of DC OK Active Signal

(a) 5V signal



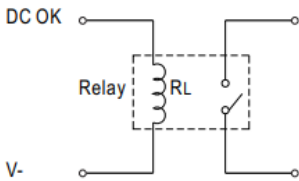
Model	R
5V	$\geq 200\Omega$
12V	$\geq 1.5K\Omega$
15V	$\geq 2K\Omega$
24V	$\geq 3.9K\Omega$

(b) LED



Model	R
5V	$\geq 1K\Omega$
12V	$\geq 2.4K\Omega$
15V	$\geq 3K\Omega$
24V	$\geq 4.7K\Omega$

(c) Relay



Model	RL
5V	$\geq 120\Omega$
12V	$\geq 700\Omega$
15V	$\geq 700\Omega$
24V	$\geq 1.2K\Omega$